

Info



Your

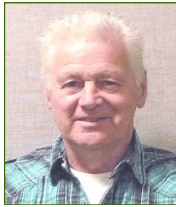


MUNICIPAL BULLETIN

Wentworth - December 2016

HOLIDAY SCHEDULE MUNICIPAL OFFICE

For the Christmas Holidays, the Municipal Office will be **closed from Thursday Dec. 22nd at noon until Monday Jan. 2nd inclusively**. We will return, Tuesday Jan. 3rd, 2017 at 9a.m.



Message from the Mayor

Dear citizens,

As every year, your Council, with the cooperation of our employees, is preparing the next budget.

In a context where revenues are virtually stable and expenses are going up, it is time to make certain choices. Our Municipality is fortunately in an excellent financial situation.

Of our borrowing By-laws only one is subject to general taxation, being the auto-pump fire truck, which cost only \$15.61 annually per taxpayer. Other borrowing By-laws are subject to a sector tax.

This minimum charge of \$15.61 leaves all the flexibility for the Council to request borrowing for our project of a new Town Hall. Everything is ready. Current and future needs have been identified. An architect was mandated to prepare a preliminary plan. An estimate of costs was submitted to the Council. We are now proceeding with the purchase of the land. Only the funding remains to be authorized.

At the last caucus on November 2nd, I informed the Council that I was leaving the territory of the Township of Wentworth as of December 1st, 2016. It is with regret that I have left my position as mayor on November 30th. I would like to thank all those with whom I have had the pleasure of working in the course of my duties. I met amazing people dedicated to our Municipality. Finally to you, dear citizens, thank-you for having given me your confidence. I consider it a great privilege to have been at your service

Again, thank you all !

Sincerely,

Marcel Harvey



IN THIS ISSUE :



- Message from the Mayor p.1
- Message from the Tax Dept. p.2
- Message from Town Planning p.2
- Message from the Fire Dept. p.3
- Family & Senior Policy p.4
- The Green Bulletin p.5
- The Billboard p.6
- The Activities p.7
- The Wentworth Games p.8



You are invited to attend your Municipal Council Meeting held once a month :

NEXT MEETING FOR 2016 :
Monday Dec. 5th at 7p.m.

At the Wentworth Community Center
86 Louisa Road

The schedule for the 2017 Council Meetings will be informed, once they are adopted by the Municipal Council.



The Municipal Council, Fire Department and Municipal Employees take this opportunity to wish citizens of the Township of Wentworth a Happy Holiday Season !

May your Christmas be filled with unforgettable moments of laughter and happiness. Wishing you all a Healthy & Peaceful New Year !



Would you like to contact us ?

Several options are available:

By phone, Email or in person

The Municipal Office is open

Monday thru Friday, from 9 a.m. to 4:30 p.m.



MUNICIPAL OFFICE
114 Louisa Road, Wentworth, Qc J8H 0C7

Phone : (450) 562-0701

Fax : (450) 562-0703

Email: info@wentworth.ca

Website: www.wentworth.ca





Let's help people in need for the Holidays

For the Holiday Seasons, let's all be generous.

**Donation boxes are available at the
Municipal Office until December 16th.**

Bring your non-perishables and we will donate to those in need.

Thank-you!



Message from the Tax Dept.

Municipal Tax for 2017 - The Municipal Tax bill for 2017 will be mailed to you by the end of January. If your mailing address has changed, please advise us by email at info@wentworth.ca or call us at (450) 562-0701.



2017 Budget Presentation



You are invited to the presentation of the 2017 Municipal Budget, which will be adopted on December 19th at 7p.m., at the Wentworth Community Center (86 Louisa Road).



Would you rather receive your Municipal Bulletin by Email ?



Are you currently receiving your Municipal Bulletin 'Info Wentworth' by mail, but would like to receive it only by Email ? It's possible ! Simply ask to be removed from the mailing list by contacting the Municipal Office at 450-562-0701 or at info@wentworth.ca

DUNANY STUDIO

The Municipality of the Township of Wentworth displays various paintings created by the Dunany Studio Artists.



Stop by the Municipal Office and admire their beautiful art works !

We are proud to offer a visibility to the local artists!



Toll free 1-800-711-1800
www.echecaucrime.com

Échec au crime offers a simple and sympathetic way to **report and prevent a crime** anonymously and safely. It plays a major role in preventing crime and acts as an intermediary between the public and the police in gathering and sharing information.

TO REPORT A CRIME, IS TO REJECT VIOLENCE AND ABUSE.



Message from the Town Planning



Winter season is near...

BINS : FORESEE SNOW AND ICE REMOVAL, SPACE AND STORAGE

This winter, make sure that your bins are cleared of snow, well de-iced and easily accessible.

Place them on your property near the road the day of collection and make sure to bring them back to a safe place where they will not be damaged by the snowplow.



2016 BY-ELECTION



Congratulations to Jason Morrison who has been elected Councillor in Seat number 3 at the By-Election held on October 23rd, 2016

Please find the results of the voting on our Website at www.wentworth.com



THROWING, PUSHING & DUMPING

We remind you that the throwing, pushing and/or dumping of snow and ice from private land or driveways onto public property including roads, is prohibited.





Message from the Fire Dept.

For **any emergency**, call **9-1-1** or for more information or questions about fire safety, please contact your Fire Department at (450) 562-0701 ext. 2929

WINTER SAFETY - The winter season is the worst season for fires in Canada. That is why we all must be mindful of the importance of fire prevention and safety, especially during Holiday Season. Here are some good safety tips to remember :



FIREPLACE AND CHIMNEY :



- Use a screen in front of the fireplace opening to protect against escaping sparks;
- Never overload your fireplace;



- Open the damper before lighting the fire, and keep it open until the ashes are cool enough to touch;
- Collect the ashes regularly. Always place the ashes in a metal container and take them outside the house;
- Do not hang Christmas stockings on the fireplace mantle when wood is burning in the fireplace;
- Make sure to have chimneys cleaned and serviced at regular intervals by a professional.

CARBON MONOXIDE (CO) :



- It is important to install a carbon monoxide detector in your home;
- Keep all fuel-burning equipment free of lint, dust and trash;
- Ensure a source of fresh air when operating a wood-burning fireplace;
- Proper venting of fuel-burning appliances to the outside is also essential to prevent collection of carbon monoxide gas inside buildings;
- Have your heating appliances and household electrical appliances checked annually (ex: oil furnace, gaz stove, etc..).

CHRISTMAS TREE :



- A tree that has just been cut will remain green for a longer time and will pose less risk of fire;
- Never put candles in the tree;
- Do not obstruct doors and windows;
- Of course, place your tree at more than 1m away from any source of heat or flame;
- Place your live tree in a full water container and water it daily.

CANDLES :



- Place candles on a stable surface, away from items that can catch fire ;
- Never leave lit candles unattended;
- Extinguish candles when leaving the room or going to sleep.

LIGHTS AND DECORATIONS :



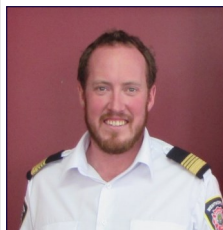
- Choose decorations that are non-flammable, non-combustible and non-conductive;
- Always turn off the Christmas lights and decorations before going to bed;
- Avoid using angel hair and snow spray. It is a mixture that can be very combustible;
- Using a bulb with too high a wattage can cause the light string to overheat, creating a fire risk.

EXTENSION CORDS :



- Never overload wall outlets;
- Make sure that your extension cord has sufficient capacity to power the appliance on which you are using it as it can heat up to the point of causing a fire;
- Electrical extension cords are frequently the cause of fires. They are not designed for permanent installations, but to meet a temporary need.

Finally...make sure your smoke detectors work, check & replace the batteries if necessary. Remember, your smoke alarm keeps you safe day and night. Enjoy the winter season !



The Fire Department takes this opportunity to wish you a very *Happy Holiday Season* filled with *Joy, Happiness and Serenity* !

Your Fire Chief

Brian Morrison

(450) 562-0701 (2929) Email: bmorrison@wentworth.ca



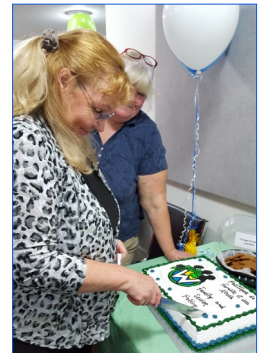
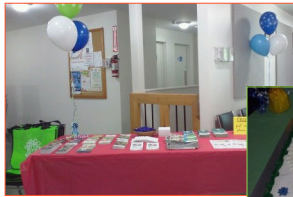


FAMILY & SENIORS POLICY



* LAUNCH *

Saturday November 26th at the Wentworth Community Center, the **FAMILY AND SENIOR POLICY** official Launch was held. For the event, a "**Harvest Supper Pot Luck Style**" was served. Thank-You for being there !



Come and get your **Policy Guide** at the Municipal Office !

* DECEMBER ACTIVITIES *

At Wentworth Community Center (86 Louisa Road)

Wednesday Dec. 14th from 6p.m. to 7p.m.

READING & INTERNET CAFÉ

Come and choose your next readings and have a coffee with neighbors & friends !



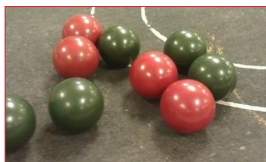
FREE !



2017 Reading & Café Internet



- Wednesday -January 18th
- February 15th
- March 15th
- April 19th



FREE ! Wednesday Dec. 14th (7p.m. to 8:30p.m.)

INTRODUCTION TO CARPET BOWLING

Come play and have fun with neighbors & friends !

Wednesday Dec. 7 & 14th from 7p.m. to 9p.m.

Christmas wrapping Workshop

Cost : \$5 per evening



Bring your scissors



For info & inscription:

Marion Hodge

Phone:
(450) 533-4418



Email:
mhodge249@gmail.com



The 2017 activities will soon be advised !



THE GREEN BULLETIN



Giant of the plant world

To understand the forest, it is necessary, first and foremost, to know about the trees. Being familiar elements of our landscapes, trees are living things and, like all other living things, they are born, grow, reproduce and die.

What is a tree?

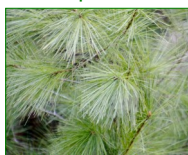
The dictionary defines a tree as a large ligneous plant with roots and a stem, known as a trunk, which bears branches. Generally speaking, trees are over four (4) meters high. A plant that is smaller and has numerous branches growing from its base is known as a shrub or bush. Trees can be divided into two (2) main categories, namely **the conifers**, also known as softwoods, and **the hardwoods**.

Conifers

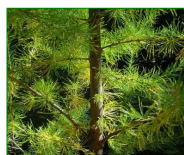
The leaves of conifers usually take the form of needles or scales. Conifers produce cones, hence their name. Cones are the fruit of the tree, and contain seeds. The wood of conifer trees - the balsam fir, for example - contains a fragrant gum-like substance known as resin. Their name in French 'résineux' is derived from this trait.

Québec is home to approximately twenty (20) softwood species. Here are a few :

Black spruce



Tamarack



White spruce



Balsam fir



White pine



Hardwoods



The hardwoods are sometimes known as deciduous trees. Because of their physical and chemical properties, their wood is usually denser and hence harder than that of the softwoods. In our temperate climate, the hardwoods lose their leaves in the fall. The fall colours offer a wonderful visual spectacle.

Québec is home to more than fifty (50) hardwood species (eg.: Yellow Birch, Beech, Sugar Maple and Red Oak).

A world of its own !

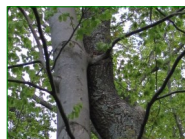
Obviously, a forest contains much more than trees, it is a world that is both complex and fascinating. In Québec, forests provide shelter for more than 400 species of mammals, birds, reptiles and amphibians, thousands of insects and thousands of other plant species.

While the expertise acquired up to now enables us to ensure sound management of our forests and the protection of hundreds of animal species that live there, the *Ministère* continues to invest significant effort in deepening its knowledge and to better understand the links between the multiple components of the forests.

Vast, majestic, dotted with thousands of lakes and rivers, forests play an important role, from an economic, social and environmental sectors. And because they are of concern to all Quebecers, the Government manages them in accordance with the principles of sustainable development. This ensures that forests and their resources are protected and preserved in the best interests of present and future generations.

Source : Ministère des Forêts, de la Faune et des Parcs (MFFP)

Beech Cortical Disease - Important presence in the forests of Argenteuil



Beech cortical disease is characterised by the appearance of cankers on the trunk, causing defoliation on the crown, deformation of the bark and death of the tree, and this, in a relatively short period of time.

Currently, in the region of Argenteuil, the disease evolves very quickly, and the affected trees quickly become unusable even for firewood purposes.

According to the Ministry of Forests, Wildlife and Parks, there is still no effective solution or direct means to control the insect partly responsible for the spread of the disease. However, some interventions help reduce forest vulnerability.

Removal of infested beech trees is the best and only way to stop its spread. It is strongly recommended that forest owners check or have a forest professional verify the condition of their forest.

For more information, www.mffp.gouv.qc.ca

THE BILLBOARD



A topic interests you and you would like to discuss it ? Let us know your suggestions at info@wentworth.ca. We will gladly write on the subject in our future publications. Thank you !



POINSETTIA, the Christmas star

Native of Mexico and emblem of the Christmas Holidays, the Poinsettia is one of the most beautiful interior plants. However, it is a fragile plant that fears cold and drafts. The flowers are the little yellow balls that make up their center and the leaves take on bright colors to warm the winter season.

The **Poinsettia**, is a true natural antidepressant !



LIVING IN WENTWORTH

Proclaimed "Township" on June 3rd 1809, Wentworth is an undeniable haven of peace and offers an incomparable quality of life. Strewn with more than 40 lakes, they have become over the years very popular vacation spots including Lake Louisa which is one of the largest lakes in the Argenteuil region. Wentworth is one of the most "green" municipalities of the MRC d'Argenteuil by its proximity to nature.

The durability of its Town Planning regulations ensure harmonious development with nature, the environment and the protection of lakes and landscapes.

To resume, the Township of Wentworth is an idyllic place for nature lovers for its fauna, flora, forests and of course, its wooded charm.



According to **WIKIPEDIA**...«**Wentworth** is a **Township Municipality** in the Laurentides region of Québec, part of the Argenteuil **Regional County Municipality** (MRC), north-west of Lachute».

DEFINITIONS

Township: A cadastral division generally quadrangular with a normal area of one hundred square miles. Originally, a Township was a historic cadastral division of the territory to facilitate the concession of public lands to individuals for settlement.

Generic term : territory.

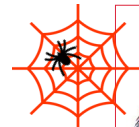
Municipality: An administrative entity established under a provincial law to administer a territory delimited by order of the Government of Québec.

Local Municipality: Sometimes called a rural or rural municipality distributed among the parish and township municipalities, governed by the Municipal Code of Québec.

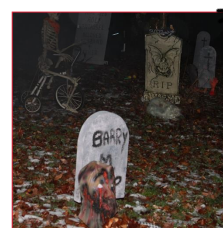
Regional County Municipality (MRC): An administrative entity that provides for the regional management of local municipalities, which are grouped into supralocal communities, each of which enjoys a power of jurisdiction and regulation devolved by the Government of Québec on a territory designated as the county.



2016 HALLOWEEN PARTY



On October 28th at the Wentworth Recreative Center, numerous visitors were brave to walk through the Witch's scary trail and visit the Haunted Ship & Castle :



A HUGE THANK YOU TO THE **Wentworth Recreative Center** VOLUNTEERS FOR ORGANISING
A SPOOKY BUT SUPER FUN HALLOWEEN PARTY !
THE COMMUNITY IS ALREADY LOOKING FORWARD TO NEXT YEAR !



ACTIVITIES AT THE WENTWORTH COMMUNITY CENTER



SANTA ARRIVES AT WENTWORTH



Christmas Party - Children 10 years and under
Saturday Dec. 3rd from 10a.m. to noon
Milk & Cookies

Bring a small gift wrapped with your child's name for **Santa** to give

Info: Karen Graham 450 533-4690



Organised by the Wentworth Recreative Center



Quote of the day...

« When it rains, look for the rainbow....
 When it's dark, look for the stars ! »

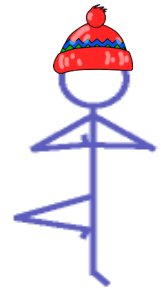


Pilates WINTER SESSION

Cost for 10 courses : \$50 resident - \$75 non-resident
 (at the Wentworth Community Center, 86 Louisa Road)

Monday at 10a.m.
 Beginning January 16th
 until March 20th

Friday at 10a.m.
 Beginning January 20th
 until March 24th



A minimum of 10 participants is required per class, and fees must be paid before **December 15th** at the Municipal Office (114 Louisa Road)
 Info & inscription : June Parker tel. (450) 562-8664 or bigred2171@bell.net

CROSS-COUNTRY SKIING & SNOWSHOEING DUNANY GOLF CLUB



Again this year, Wentworth citizens can enjoy the enchanting site of the vast and beautiful land of Dunany Golf course for cross-country skiing & snowshoeing, free of charge.

Enjoy the winter season !

Planning a family gathering party ?

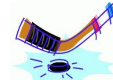
You can rent the Wentworth Community Center by contacting Lois Armitage (450) 562-0701 x. 2923



As soon as the weather permits, the **WRC Skating Rink** will be open 24 hours a day, 7 days a week with access to a heated building where you can comfortably put on your skates.

Whether for free skating, broomball or hockey games with friends, the rink is available to all Wentworth citizens.

Kids and Parents, enjoy the fresh air & let's play outside !



Township of Wentworth... Where country living is a reality !



ST. AIDAN'S

Anglican church (86 Louisa Road)

Christmas Celebrations
 Dec 18th - 11a.m. (Lessons & Carols)
 Dec 24th - 7p.m. (Christmas Eve service)



Protection of the Mother-of-God Monastery

Romanian Orthodox Archdiocese (168 Louisa Road)

Divine liturgy
 Every Sunday
 10h30 a.m.



Christmas Celebration
 December 25th
 10h30 a.m.



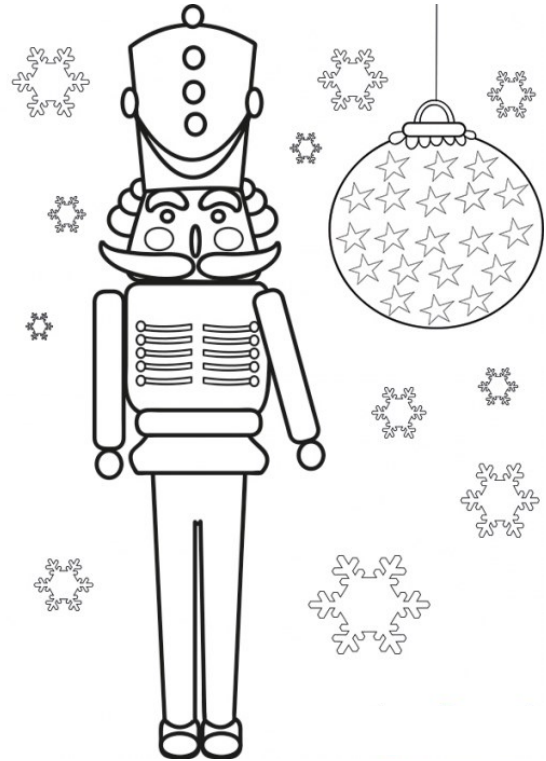
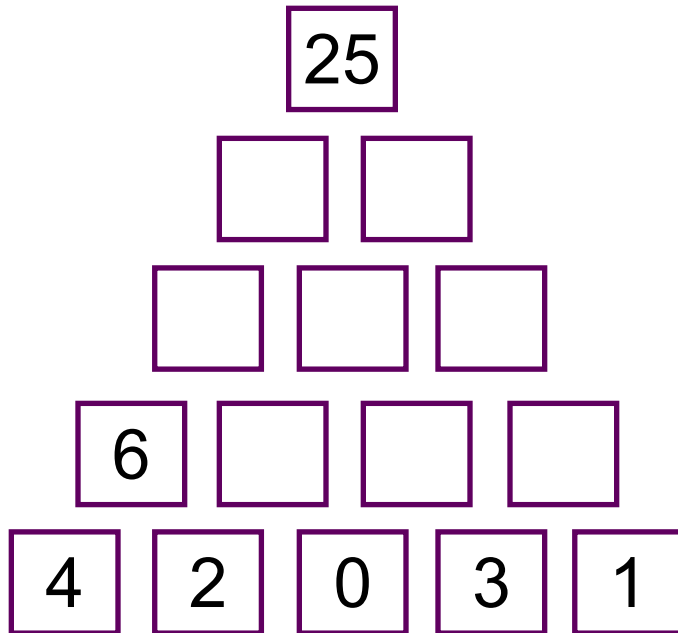


THE WENTWORTH GAMES

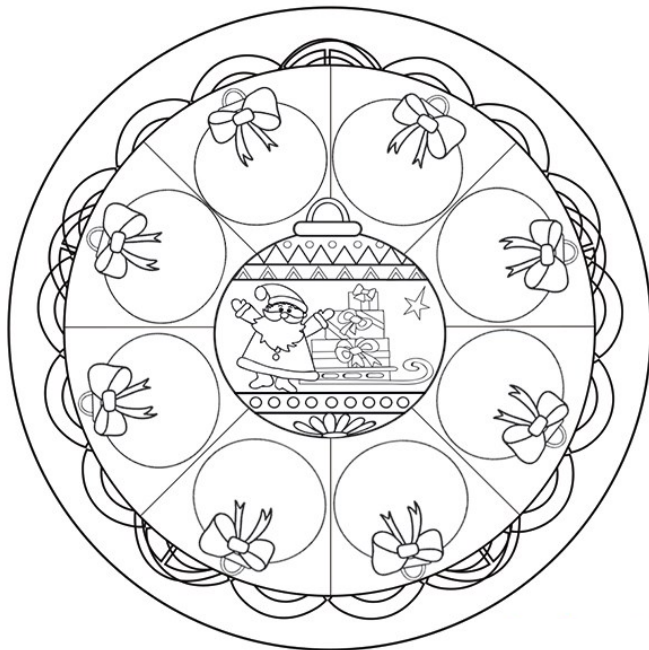


Let's colour !

PYRAMID



Christmas Mandala



Sudoku (level 1)

		5		3			7	
3	1		4	7	6		9	
9			5	1		4		
	8		3			7	4	2
5			7		2			6
2	7	9			4		5	
		2		4	7			9
	9		8	5	3		2	7
	6			2		5		